

# FUNGUS CAN HIDE FROM

# Sporanox<sup>\*</sup>

itraconazole 100 mg

One of the notorious problems with fungal infections of the skin or the vagina is that the organism may penetrate the deeper layers of the epithelium, out of reach of topical medication. And besides, when treating fungal skin lesions locally, the infection is often already subclinically present at other sites of the body, waiting for a chance to start the trouble all over again.

Because Sporanox works orally, i.e. "from the inside out", it will destroy even the best hidden fungal cells. All the more so, because Sporanox has a strong affinity for epidermal and mucosal tissues as well as for the fungal cell wall itself where it must exert its fungicidal activity.

## SHORT AND SIMPLE ORAL THERAPY

**Standard dose in Dermatology:** 1 capsule (100 mg) once daily for 15 days  
(Sporanox will remain active in the stratum corneum for another 3-4 weeks)

**Standard dose in Gynaecology:** 2 x 2 capsules (400 mg) for 1 day only  
(Sporanox will remain active in the vaginal epithelium for another 3 to 4 days)

**This product is not yet available in all countries.**

**\* Trademarks: SPORANOX, SEMPERA, TRISPORAL, SPORAL.**

**Properties:** Sporanox (itraconazole), a triazole derivative, is orally active against infections with dermatophytes (*Trichophyton* spp., *Microporum* spp., *Epidermophyton floccosum*), yeasts (*Candida* spp., *Pityrosporum* spp., *Malassezia* spp.) and various other yeasts and fungi. It is also active against *Aspergillus* and *Fusarium* species. It is also active against *Trichomonas vaginalis*.

**Standard dose in Dermatology:** 1 capsule (100 mg) once daily for 15 days. **Pityriasis versicolor:** 2 capsules (200 mg) once daily for 7 days.

**Tinea corporis, tinea cruris, tinea pedis, tinea manus:** 1 capsule (100 mg) daily for 15 days; highly keratinized regions, as in plantar tinea pedis and palmar tinea manus, require 1 capsule (100 mg) daily for 30 days.

**Oral candidosis:** 1 capsule (100 mg) daily for 15 days. **Fungal keratitis:** 2 capsules (200 mg) every day for 21 days. **Contraindications:** Sporanox (itraconazole) is contraindicated in patients with severe liver disease and in patients with a known hypersensitivity to itraconazole.

advisable not to give this drug to patients with a known history of liver disease. **Nursing mothers:** It is recommended not to breast feed whilst taking Sporanox (itraconazole). **Drug Interactions:** Sporanox (itraconazole) should not be taken concurrently with drugs which are metabolized by the CYP2C19 enzyme.

**Full information on Sporanox is available on request.**  
**AMSEN**  
Pharmaceuticals  
S.A. - Belgium



# Guarding the Guardians: Research on

## EDITORIAL PEER REVIEW

Following the success of the American Medical Association's First International Congress on Peer Review in Biomedical Publication, a second such Congress is being planned for September 1993. We aim to present original research on critical issues in the publication of all clinical and scientific research.

What are such critical issues?

- The mechanisms of peer review and editorial decision making in different journals
- The relationships between authors, editors, and reviewers, and how each is educated, selected, and evaluated.
- Allocation of responsibility for published material
- Quality assurance
- Breakdowns, weaknesses, and biases

For more information on attending or presenting research, contact:

Jane Smith, BA, MSc  
Managing Editor, *BMJ*  
BMA House  
Tavistock Square  
London WC1H 9JR  
Telephone: 071-387-4499  
Facsimile: 01-383-6418



**BEGIN PLANNING YOUR RESEARCH PROTOCOLS NOW!**

**"Dr Buxton's book is  
a must . . . it is  
cracking good value"**

**GP**

Non-specialists overwhelmed by too many systematic descriptions of individual disease will welcome the new approach of the *ABC of Dermatology*. Here the history, clinical appearance, and pathology of a few common key conditions are discussed and then used as a basis for comparison with other skin diseases. Also dealing in detail with allergic reactions, autoimmunity, acne, and infections, this handbook is **fully illustrated in colour**, providing a clear guide to assessment and treatment as well as an understanding of the histological changes underlying the clinical presentations.

"... this little gem is a worthy challenger to all the introductory texts . . ."

*Journal of the American Academy of Dermatology*

"... extremely good value for money."

*Contact Dermatitis*

"... no hesitation in recommending this book . . ."

*Occupational Medicine*

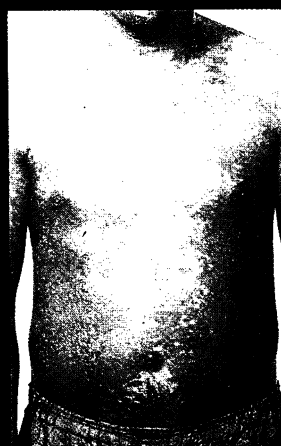
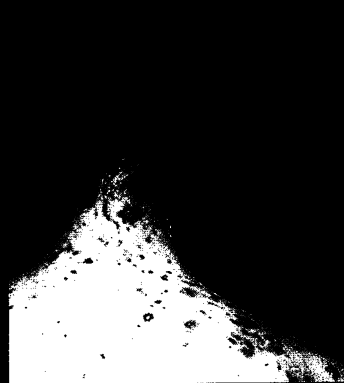
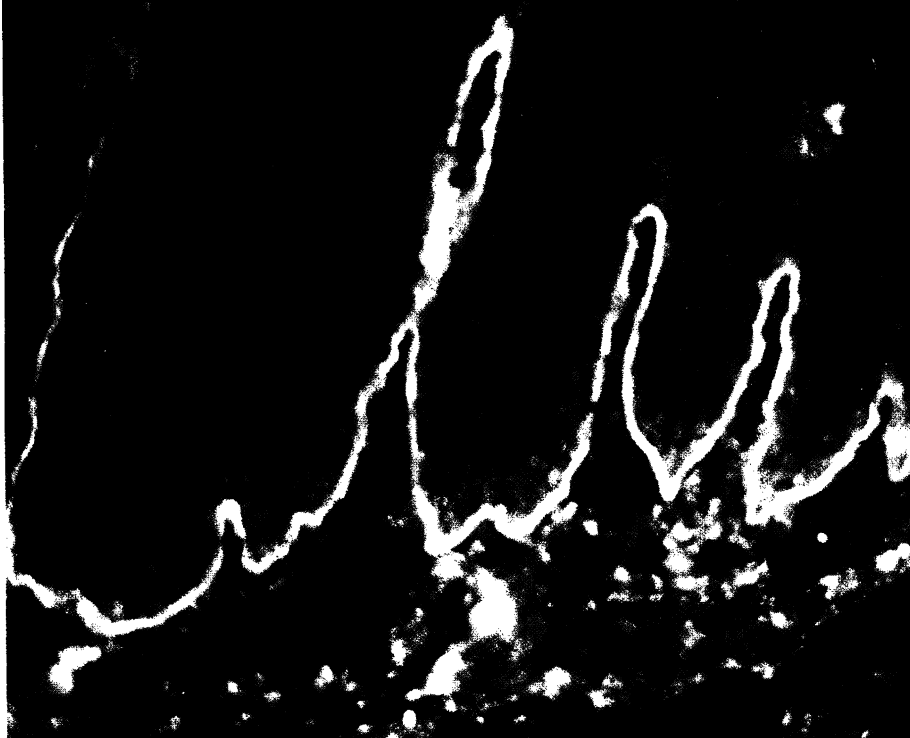
UK £11.95; Abroad £13.50

BMA members £10.95 or £12.50  
including postage, by air abroad

# ABC OF DERMATOLOGY

P K BUXTON

BMJ



Available from: BRITISH MEDICAL JOURNAL,  
PO Box 295, London WC1H 9TE, medical booksellers  
or the BMJ bookshop in BMA House

Please send me \_\_\_\_\_ copy/ies of  
ABC OF DERMATOLOGY

I enclose \_\_\_\_\_ Please make cheques payable  
to British Medical Journal

Debit my credit card (please tick box)

☐ Visa ☐ American Express ☐ Mastercard

Card No. \_\_\_\_\_

Card expiry date \_\_\_\_\_

Signature \_\_\_\_\_

BMA Membership No. \_\_\_\_\_

NAME \_\_\_\_\_

ADDRESS \_\_\_\_\_

\_\_\_\_\_

\_\_\_\_\_ POSTCODE \_\_\_\_\_

☐ Please send me a book catalogue

# Prepulsid<sup>TRADEMARK</sup>

## Gets stomach and oesophagus back to work.

### Prepulsid. The force behind G.I. motility.

**Prescribing information** - Prepulsid (cisapride) is a gastro-intestinal prokinetic agent. Prepulsid enhances and co-ordinates gastro-intestinal propulsive motility, thereby preventing stasis and reflux. **Therapeutic indications:** 1. Gastroparesis. 2. Symptoms of X-ray or endoscopy negative upper digestive discomfort. 3. Gastro-oesophageal reflux disorders, including oesophagitis. 4. Intestinal pseudo-obstruction. **Contra-indications:** No absolute contra-indications are known. **Warnings:** Caution should be observed in patients in whom an increase in gastro-intestinal motility could be harmful. **Precautions:** *Pregnancy:* Although, in animals, there is no effect on primary fertility, no primary embryotoxic and no teratogenic effect, the anticipated therapeutic benefits should be weighed against the potential hazards before Prepulsid is given during pregnancy, especially during the first trimester. *Nursing mothers:* Although the excretion in breast milk is minimal, nursing mothers are advised not to breast feed while taking Prepulsid. *Driving and machine-operating ability:* Prepulsid does not affect psychomotor function and does not induce sedation or drowsiness. Prepulsid may, however, accelerate the absorption of central nervous system depressants, such as barbiturates and alcohol. Caution should therefore be exercised when Prepulsid is administered with these drugs. **Interactions:** - The acceleration by Prepulsid of gastric emptying may affect the rate of absorption of drugs: absorption of drugs

from the stomach may be diminished, whereas absorption of drugs from the small bowel may be accelerated (e.g. benzodiazepines, anticoagulants, paracetamol, H<sub>2</sub>-blockers). - In patients receiving anticoagulants, the coagulation times may somewhat increase. It is advisable to check the coagulation time one week after the start of Prepulsid treatment to adapt the anticoagulant dose if necessary. The sedative effects of benzodiazepines and of alcohol may be accelerated. - The effects of Prepulsid on gastro-intestinal motility are, for the most part, antagonized by anticholinergic drugs. - In hepatic and renal insufficiency, it is recommended to halve the initial daily dose. Subsequently, this dose can be adapted, depending on the therapeutic effects or possible side-effects. - In the elderly, steady-state plasma levels are generally higher, due to a moderate prolongation of the elimination half-life. Therapeutic doses, however, are similar to those used in younger patients. - In the case of drugs that require individual titration, it may be useful to monitor plasma levels of such drugs when Prepulsid is associated. **Adverse reactions:** In line with the pharmacological activity of Prepulsid, transient abdominal cramping, borborygmi and diarrhoea may occur. Mild and transient headache or lightheadedness have been reported occasionally. When diarrhoea occurs in babies or infants, the dose should be reduced. There are isolated reports of CNS effects, i.e. convulsive seizures and

extrapyramidal effects. **Dosage:** - Adults: according to the severity of the condition, 15 to 40 mg daily, to be given in 2 to 4 intakes, to be taken as tablets or as oral suspension (the full plastic 5-ml spoon contains 5 mg). As a rule the following doses have proven adequate: • less severe conditions: 5 mg t.i.d. (dose can be doubled); • severe conditions (gastroparesis, oesophagitis, refractory constipation): 10 mg t.i.d. to 10 mg q.i.d. (before the 3 main meals and before retiring). - Infants and children: on the average 0.2 mg/kg per intake, 3 to 4 times daily. For the suspension, intakes are indicated on the dosing pipet as a function of body weight.

Full prescribing information available on request.

**Note:** Prepulsid (cisapride) is not yet available in all countries and not all indications have been approved everywhere.

 **JANSSEN**  
PHARMACEUTICA  
B-2340 Beerse, Belgium