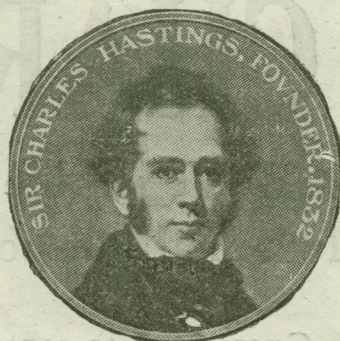


The

British Medical Journal



The Journal of the British Medical Association.

INCLUDING AN EPITOME OF CURRENT MEDICAL LITERATURE

WITH SUPPLEMENT.

No. 3208.

SATURDAY, JUNE 24, 1922.

Price 1/3

2ND EDIT. Cloth. Crown 8vo. 10s. 6d. net, post. 6d.
HYPNOTIC SUGGESTION & PSYCHOTHERAPEUTICS.

By A. BETTS TAPLIN, L.R.C.P. & L.M. Edin.
Member of Council and late President of the Psycho-Medical Society of Great Britain.
"His teaching will be appreciated both by students and practitioners."—*Proceedings of Royal Society of Medicine.*
LITTLEBURY BROS., 3, Crosshall Street, Liverpool.
SIMPKIN MARSHALL & CO., LTD., London.

OXFORD MEDICAL PUBLICATIONS

CATARACT & ITS TREATMENT

By H. KIRKPATRICK, M.B.,
Lt.-Col. Indian Medical Service (Retired);
late Superintendent, Government Ophthalmic
Hospital, Madras.
Pp. 201. Price 12s. 6d.

HENRY FROWDE and HODDER & STOUGHTON,

WISE PARENTHOOD

By MARIE STOPES, D.Sc., Ph.D.
3s. 6d. net (postage extra).

Medical Schools generally have omitted Training on Birth Control so that many Doctors lack the knowledge to advise their Patients.

"WISE PARENTHOOD" is the textbook on the subject and the first scientific discussion of the various practical methods. It should be read by every Medical Man and Woman.

"It should be read, as it is intended, by married people."—THE JOURNAL OF STATE MEDICINE.

At all Booksellers or direct from
G. P. PUTNAM'S, 24, Bedford Street,
Strand, W.C.2.

THE HEART
AS A

POWER-CHAMBER.

A Contribution to Cardio-Dynamics.

By HARRINGTON SAINSBURY,
M.D., F.R.C.P.

Fellow of the Physiological Society, Consulting
Physician to the Royal Free Hospital and the
City of London Hospital for Diseases of the
Chest, Examining Physician to the
Royal National Hospital, Ventnor.

Cloth. Demy 8vo. Illustrated. Price 12s. 6d. net.

OXFORD MEDICAL PUBLICATIONS,
The LANCET Buildings, 1, Bedford Street,
London, W.C.2.

ESSAYS ON THE
SURGERY OF THE TEMPORAL BONE.

By Sir CHARLES BALLANCE, K.C.M.G.,
C.B., M.V.O., M.S., F.R.C.S.,
Consulting Surgeon to St. Thomas's Hospital, &c.
Illustrated by 125 Plates (40 in colour),
and 120 Figures.

In 2 volumes. Medium 4to. Price 7 guineas.

MACMILLAN & CO., LTD.,
St. Martin's Street, London, W.C.

NOW READY. 30s. net, postage 1s. 3d.

**TAYLOR'S
MEDICINE.**

NEW (12th) EDITION.

By E. P. POULTON, M.D.

With 24 Plates and 87 Text Figures.

J. & A. CHURCHILL, 7, Great Marlborough St., W.1.

By FREDERICK W. PRICE, M.D., F.R.S. (Edin.),
Senior Physician to the Royal Northern Hospital;
Physician to the National Hospital for Diseases
of the Heart, London.

DISEASES OF THE HEART.

*Their Diagnosis, Prognosis, and Treatment
by Modern Methods.*

With a Chapter on the Electro-Cardiograph.
Demy 8vo, 434 pp. Very fully Illustrated. 21s. net.

Lancet.—"By great care, and by the use of an
amazing amount of material, he has accomplished
what many readers have been waiting for, giving
us a complete account of the diagnosis, prognosis,
and treatment of heart diseases by modern methods
in association with all the invaluable teaching be-
queathed to us by the older masters of clinical
observation."

Dublin Medical Journal.—"It is probably des-
tined to take the place in the library of the present
day physician that was occupied some twenty or
more years ago by Sir W. Broadbent's well-known
work."

Midland Medical Review.—"It is impossible to
enumerate the many excellencies of this book."

London:

HENRY FROWDE and HODDER & STOUGHTON.

HYPNOTISM AND TREATMENT BY

3rd Ed.] **SUGGESTION.** [5/- net.

By ALBERT E. DAVIS, F.R.C.S. Ed., L.R.C.P. Hon.
Phys. to the Liverpool Psycho-Therapeutic Clinic.
SIMPKIN, MARSHALL & CO., LTD.: London.

FOURTH EDITION. Pp. viii + 99, with 4 Plates.
Price 4s. 6d. net. (postage 4d.).

**THE INTENSIVE TREATMENT OF SYPHILIS
and Locomotor Ataxia by Aachen Methods.**

By REGINALD HAYES, M.R.C.S.

The Lancet says: "No better exposition of the
method as practised there can be found than that
contained in this little book."

BAILLIÈRE, TINDALL & COX, 8, Henrietta Street,
London, W.C.2.

ISSUED WEEKLY]

[COPYRIGHT]

[REGISTERED AS A NEWSPAPER